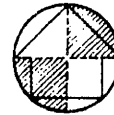


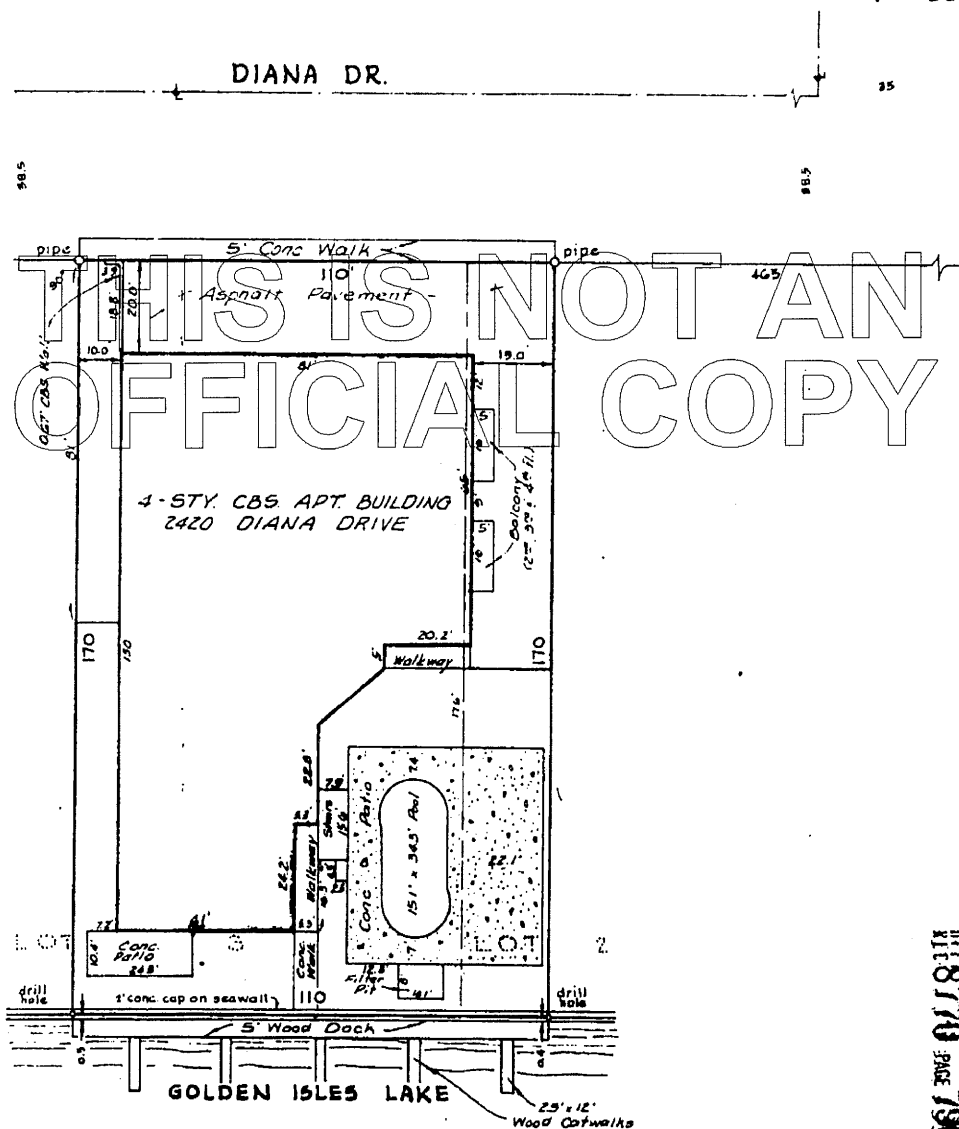
SURVEY FOR BAY PLACE, a CONDOMINIUM

DESCRIPTION

The west 20 feet of Lot 2, and the east 90 feet of Lot 3, Block 2, "GOLDEN ISLES SECTION E", according to plat thereof recorded in Plat Book 46, page 20, of the public records of Broward County, Florida.



SCALE:
1" = 30'



8118770 PAGE 790

TO ALL PARTIES INTERESTED IN TITLE TO PREMISES SURVEYED:

I, MAURICE E. BERRY II, hereby certify that I have made a recent survey of the above described property as indicated, and that there are no above-ground encroachments except as shown. I further certify that the survey represented hereon meets the requirements of the Florida Land Title Association and that this plat is correct.

Dated at Hollywood, Broward County, Florida, this 2nd day of *March*, 1979.

M. E. BERRY & ASSOCIATES
REGISTERED LAND SURVEYORS

2613 HOLLYWOOD BOULEVARD
HOLLYWOOD, FLORIDA

P. O. BOX 845
PHONE: 932-6888

Maurice E. Berry II
MAURICE E. BERRY II

EXHIBIT "A" SURVEY & DESCRIPTION 2 of 6

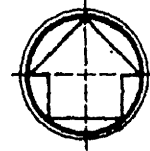


Elevations shown are based on National Geodetic Vertical Datum.
Interior walls are 6" thick unless otherwise shown.
Exterior walls are 8" thick unless otherwise shown.

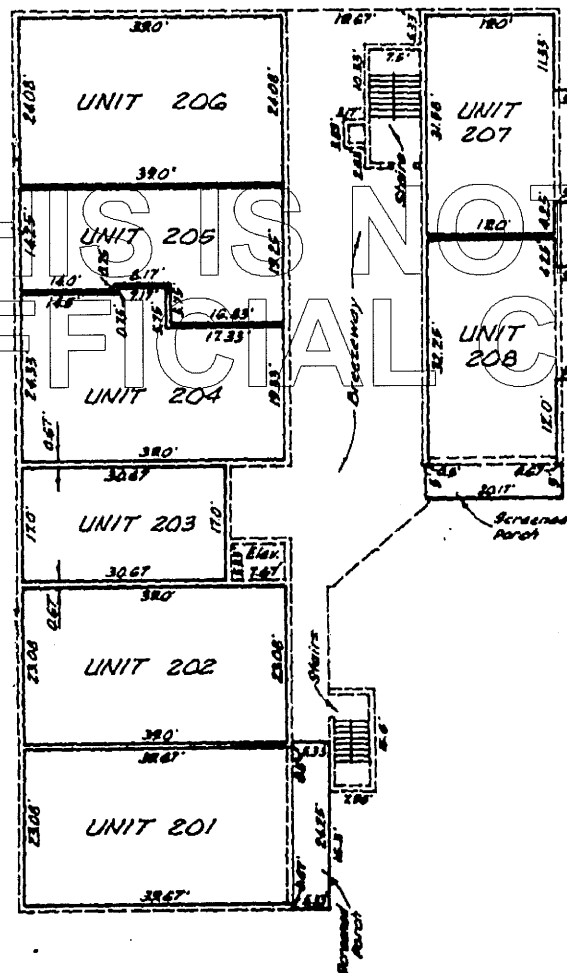
1st FLOOR PLAN Sheet 3 of 6

REC-8770 PAGE 791

BAY PLACE, a CONDOMINIUM



THIS IS NOT AN
OFFICIAL COPY



LEGEND:

—— Apartment Unit Boundary line
—— Common Element Boundary line

NOTES:

Each apartment consists of the space bound by a vertical projection of the apartment boundary lines shown, and by the horizontal planes at the floor and ceiling.

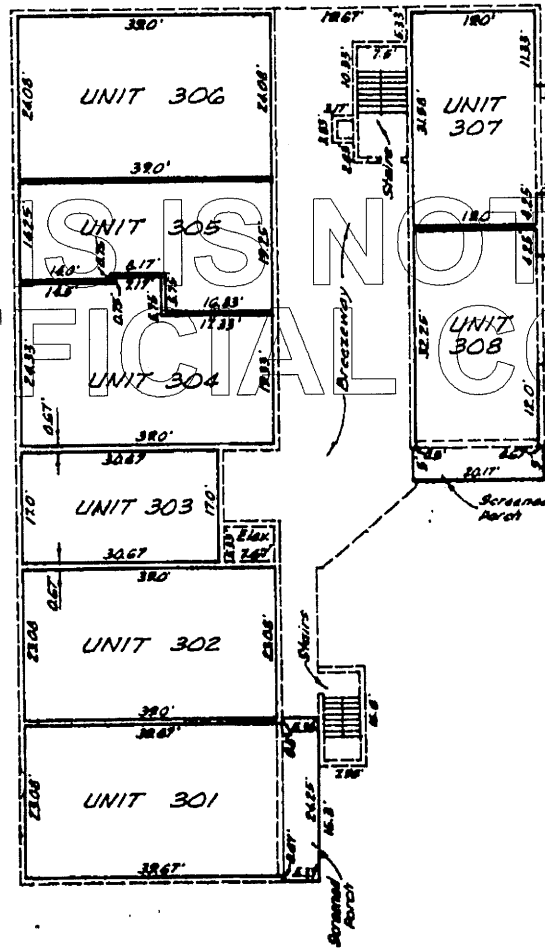
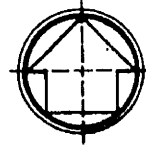
FLOOR ELEVATION: 16.68'

CEILING ELEVATION: 24.63'

Elevations shown are based on National Geodetic Vertical Datum.
Interior walls are 6" thick unless otherwise shown.
Exterior walls are 8" thick unless otherwise shown.

REC-8770 PAGE 792

BAY PLACE, a CONDOMINIUM



LEGEND:

Apartment Unit Boundary line
 Common Element Boundary line

NOTES:

Each apartment consists of the space bound by a vertical projection of the apartment boundary lines shown, and by the horizontal planes at the floor and ceiling.

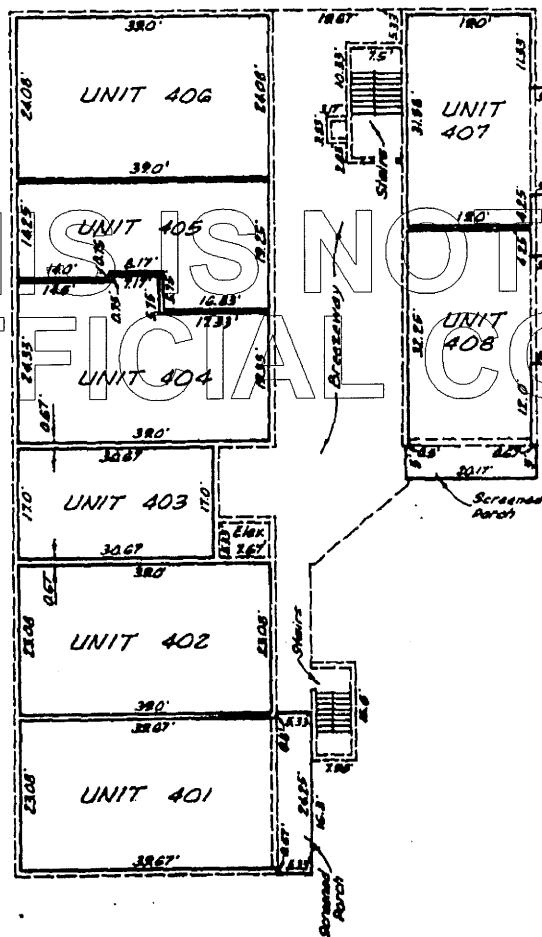
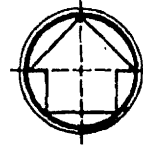
FLOOR ELEVATION: 26.28'

CEILING ELEVATION: 34.23'

Elevations shown are based on National Geodetic Vertical Datum.
 Interior walls are 6" thick unless otherwise shown.
 Exterior walls are 8" thick unless otherwise shown.

011 8770 PAGE 793

BAY PLACE, a CONDOMINIUM



LEGEND:

— Apartment Unit Boundary line
 - - - Common Element Boundary line

NOTES:

Each apartment consists of the space bound by a vertical projection of the apartment boundary lines shown, and by the horizontal planes at the floor and ceiling.

FLOOR ELEVATION: 35.78'

CEILING ELEVATION: 43.73'

Elevations shown are based on National Geodetic Vertical Datum.
 Interior walls are 6" thick unless otherwise shown.
 Exterior walls are 8" thick unless otherwise shown.

0118770 PAGE 794
 11/18/79